



## EPIC® Microbial ATP System

**for Rapid Microbial Release:**  
Speed, Simplicity, Sensitivity, Science, Support



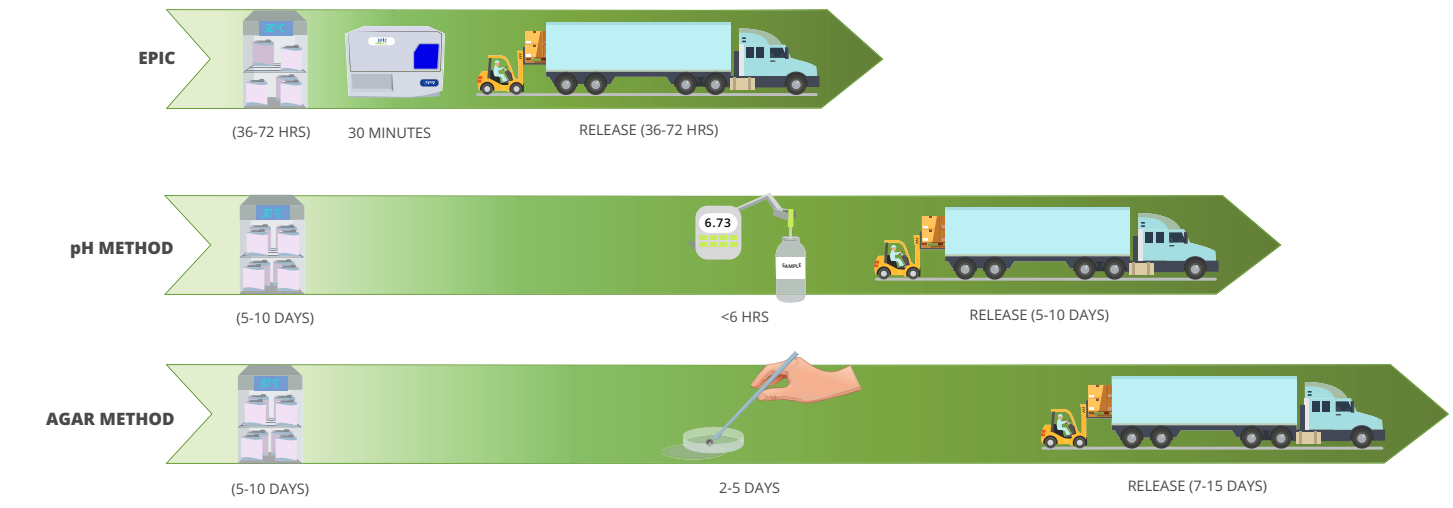
## ✓ Speed

The EPIC system predicts spoilage in Aseptic and Ultra-high temperature (UHT) extended shelf-life (ESL) products. It utilizes adenosine triphosphate (ATP), a ubiquitous biomarker, to rapidly detect microbial contamination through in package incubation.

Hold times will be significantly reduced for confirmatory testing allowing for faster evaluation, segregation, and release of quarantined product.

### Top Takeaways

- Reduce Warehouse Hold Time
- Faster quarantine dispositions



## ✓ Simplicity

The finished packaged product is incubated to accelerate the microbial growth if present. After incubation, samples are pipetted into a microplate and inserted into the EPIC system. It automatically performs the analysis in less than 30 minutes. Raw data is managed either by EPICLink database or automatically integrated into other data management systems.

### Top Takeaways

- Incubate, Pipet, Get Results
- 96 Sample Results in > 30 Minutes

## Product Testing with the EPIC System

- 1** Incubate 30 °C-32 °C for 36 to 48 hours
- 2** Shake sample vigorously before pipetting
- 3** Get results. Contaminated product limit > 300 RLU

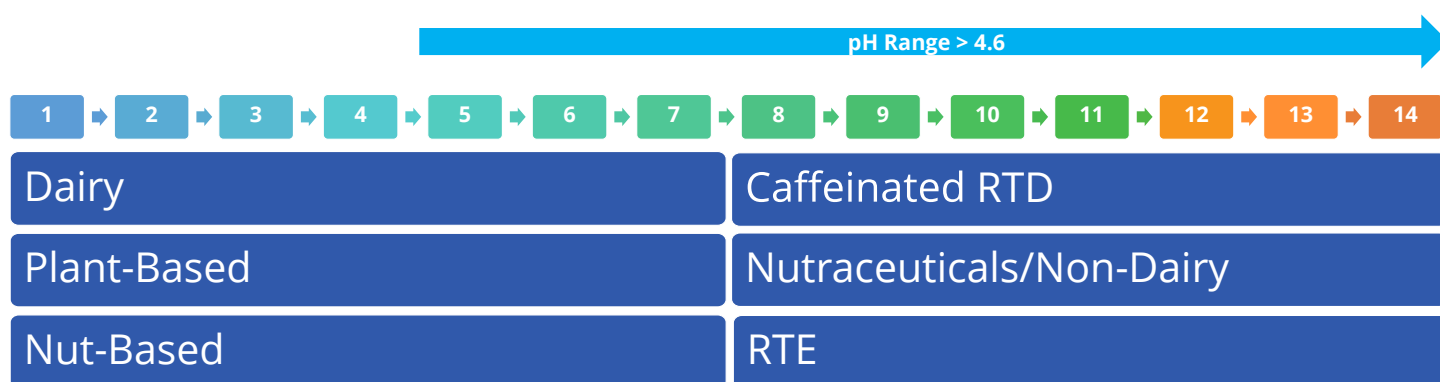


## ✓ Sensitivity

Continual validation of products utilizing a wide variety of organisms including gram negative, gram positive (including spore formers), and yeast/mold.

### Top Takeaways

- One method for multiple products
- Detecting as low as 1 CFU/package

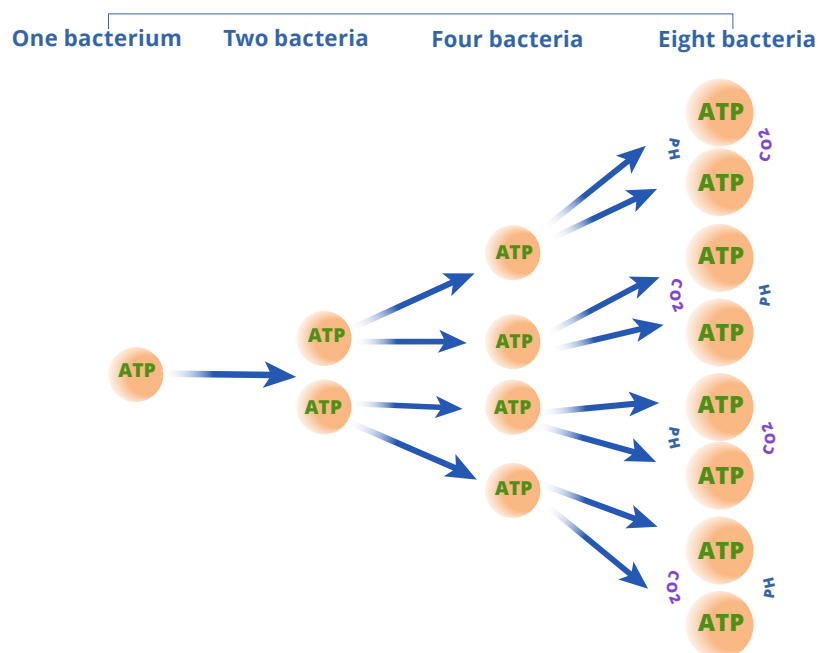


## ✓ Science

The EPIC System uses a reliable, direct measure of viable microbial contamination, ATP. Traditional methods depend upon secondary metabolic indicators of microbes, like pH and fermentation.

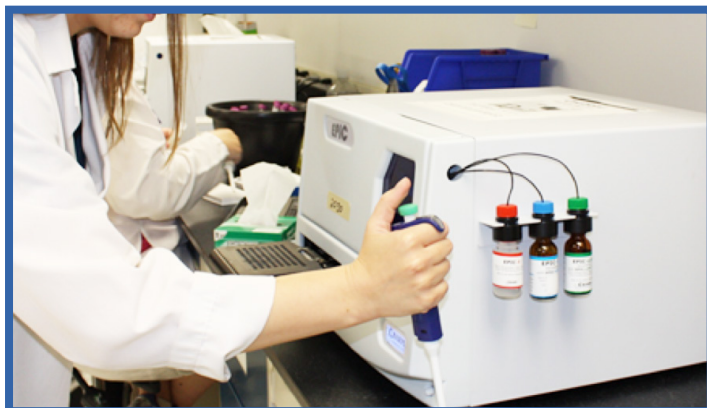
### Top Takeaways

- Early Detection of Microbial Contamination
- Detects all viable microorganisms





## ✓ Support



The EPIC system has been successfully adapted to test for a wide range of UHT beverages and products.

Continuous improvement of reagents provides increased system reliability, sensitivity, and ease of use. Reagents have been formulated for ambient shipment and storage resulting in reduced shipping costs.

Onsite installation, training, and service available.

### Top Takeaways

- Application expansion is a constant focus.
- Partnership and 24-hour support

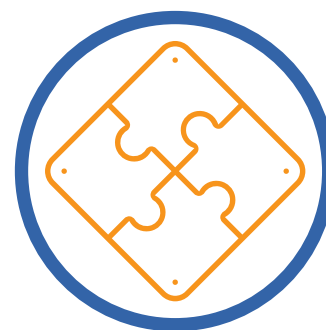
## ✓ Additional Applications



High Acid



Increased Sensitivity



Customizable Solutions

Would you like to learn more about the synergies of rapid microbial testing and just-in-time production systems?

Contact us today for a free consultation.

[www.charm.com](http://www.charm.com)

T +1.978.687.9200 | F +1.978.687.9216 | E [info@charm.com](mailto:info@charm.com) | 659 Andover Street, Lawrence, MA 01843-1032  
© 2020 Charm Sciences, Inc. | Charm and EPIC are registered trademarks of Charm Sciences, Inc. | MRK-048-006 Aug-2020

