

Refer to Peel Plate Colony Counter Operator's Manual for more detailed information.

# PeelPlate® Colony Counter

## QUICK START GUIDE V 6.0

### TOUCH SCREEN

Makes menu selection simple



PLATE NEST



WIRELESS KEYBOARD / TOUCH PAD

### POWER BUTTON

Powers the touch screen computer

### TOGGLE SWITCH

Lights the plate nest and powers the fan

### USB PORT

For copying files and archiving data to a USB or other external storage device

### USB PORT

For real-time printing and bar code scanner options

### ETHERNET

For downloading test results into SQL database in real-time

BACKSIDE

## POWER ON AND OFF

### POWER ON PEEL PLATE COLONY COUNTER



1

#### Turn On Toggle Switch

Located on back of Colony Counter. This activates the fan, light, and round power button (located on front of Colony Counter, below the touch screen). The button's blue backlight will light up when the computer turns on.

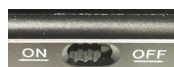


2

#### Turn On Keyboard

On/off switch is located on right top edge or bottom of keyboard.

User may use touch screen and wireless keyboard mouse as convenient.



### POWER OFF PEEL PLATE COLONY COUNTER

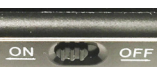
1

#### Turn Off Keyboard to conserve battery power

2

#### Turn Off Screen/Computer

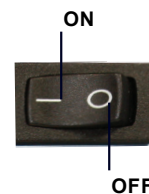
Press front power button. Do not press this button while counting a plate or while archiving.



3

#### WAIT UNTIL FRONT POWER BUTTON BLUE LIGHT IS OFF, then turn off toggle switch on back of Colony Counter.

Light and fan will power down.



## INITIAL SETUP

1

To begin initial Setup, touch screen or left click mouse, then enter **Username: Admin** and **Password: Charm**. Press OK.

2

A Pop-up appears prompting a **Calibration Check** to be run. Press **No**.

This skips Calibration and allows administrative changes only.

3

**Admin**

Press **Admin** tab to program new users into Colony Counter.

4

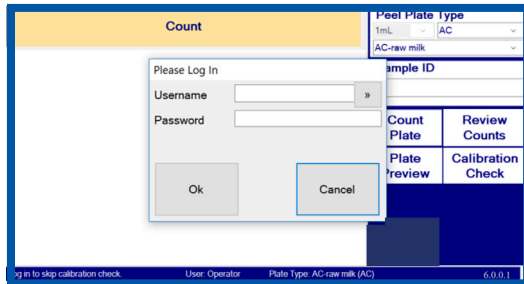
Press **Add User**. Enter new **Username** and **Password**. In **Authorization Level** drop down list, select between **Operator (O)** or **Administrator (A)**. Enter at least one Administrator **Username** and **Password**. Use these new logins for future operations.

5

After setting up new Operators and Administrator, highlight **Username Admin** and press **Change Password** button. Enter old password: **Charm** followed by a new password known only by the new administrator. Initial Set Up is done. Power Off and go to Daily Count Routine.

# DAILY COUNT ROUTINE

1

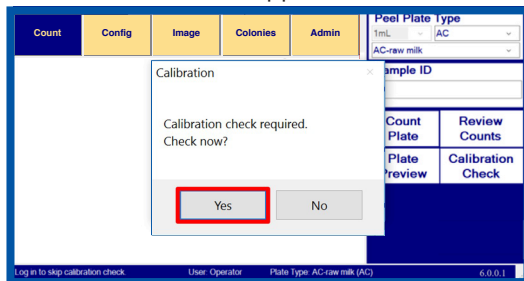


Power Up. A login screen will appear. Touch the screen or click the mouse and enter one of the names and passwords programmed in initial setup. Press OK.

An Administrator logged in will see the **Count** tabs at the top of the screen. An Operator will only see **Count**

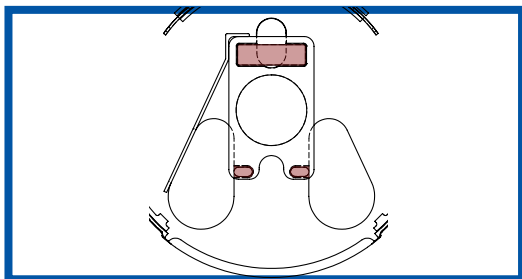
2

Press **Calibration Check** if a pop-up screen requiring calibration does not appear. Press **Yes** to continue.



The calibration message appears every time the Colony Counter is powered on, every 24 hours, or when the **Calibration Check** button is pressed. It can also be programmed by an administrator to occur after a specified number of counts.

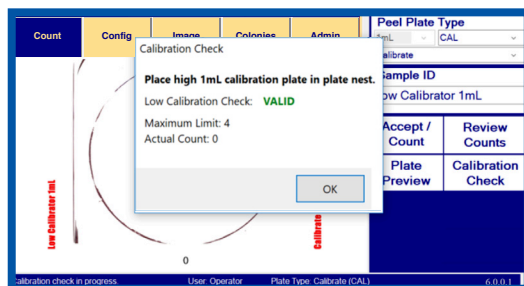
3



Slide the Low Calibration plate into the plate nest, with the gridded side up, and the large rectangle toward the back of the counter so it is seated in the recessed areas (see drawing above). Press OK.

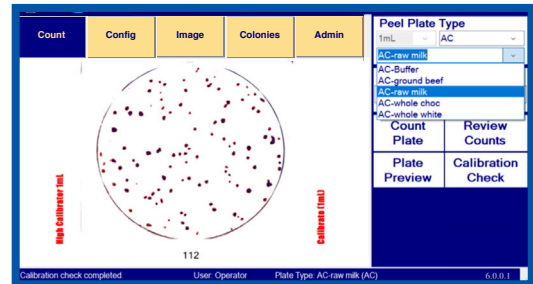
Count initiates and delivers a **VALID** if less than 4 colonies are detected.

4

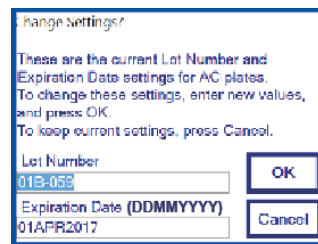


When Low Calibration is accepted as **VALID**, place the High Calibration plate in the plate nest. With the High Calibration plate in the nest, press OK. If count is **INVALID**, wipe the plate clean of debris and try again by pressing **Calibration Check**. If still **INVALID**, contact Technical Services at 1-800-343-2170. Press Yes to complete Calibration Routine.

5

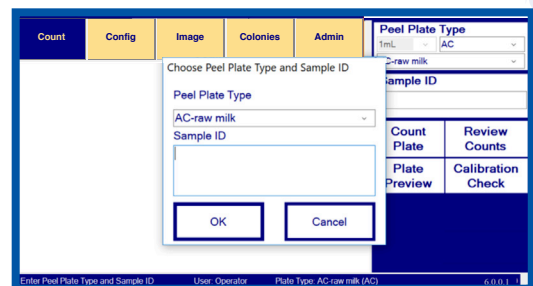


To change **Peel Plate Type**, press the arrow and select plate type. Then select product types from the drop down list of matrices. Products are customized at time of purchase or can be created by an administrator.



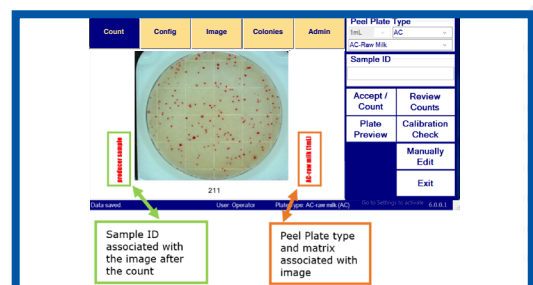
If Lot# Enter Key box on Admin tab is checked (see Initial set up step 4), a pop up box prompting Lot # and expiration date will appear with each calibration and with Peel Plate Type change. Make any edits and press OK. This option may be turned off by unchecking the box on the Admin tab.

6



Enter **Sample ID** by typing, by bar code scanner, or automatically by 2D QR-Code. Place plate into plate nest (Daily Count Routine #3), then press **Count Plate** button. Results take about 5 seconds.

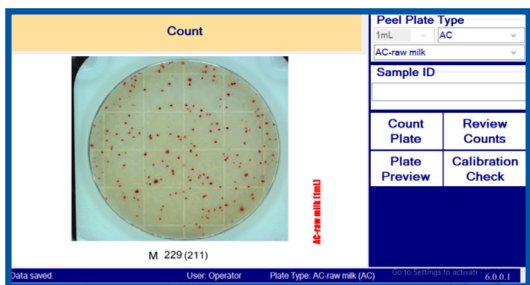
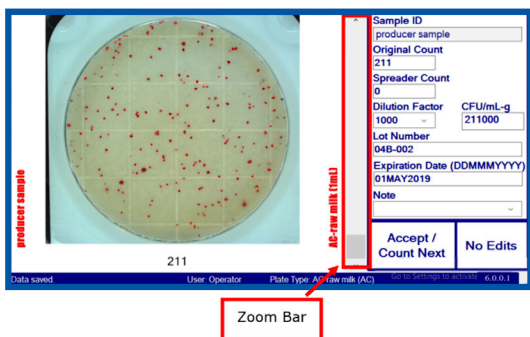
7



Count is displayed underneath the plate image. Sample ID and Peel Plate Type are displayed in red on the sides of the image. Touch an existing picture to see information associated with counted plate, make edits, or magnify counted image. See Manually Edit a Result. Remove and place a new plate in the nest. Enter new Sample ID and press **Accept/Count Next** to start analysis of next sample.



## MANUALLY EDIT A RESULT



- 1 Touch image to view a magnification bar and detailed record information for count. Use magnification bar to zoom in and see individual bacterial colonies that are counted. Each aerobic count colony is circled in red, each coliform colony is circled in red, and each *E. coli* colony is circled in blue.
- 2 To move magnified image, touch or click and hold mouse, moving to desired image location. Image will move when screen or mouse is released. Double click on a colony to center that colony in screen.
- 3 The following table fields may be manually overwritten: count, dilution factor, spreader count, lot #, expiration date, or note. Dilution and notes may be overwritten or selected using down arrows. Once completed press **Accept Edits** button or, if no changes, press **No Edits** to return to Count tab. CFU/mL-g automatically calculates with count and dilution changes.
- 4 When **Accept Edits** is pressed, data are stored and no longer editable. A manual overrides count is shown with an "M" in the data record and the original counter count in parentheses.

## REVIEW COUNT

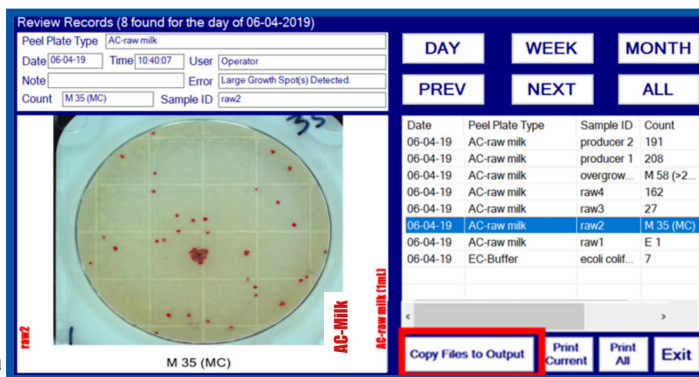
**Review Counts** button allows operators and administrators to view Peel Plate test data by **DAY**, **WEEK**, **MONTH**, or **ALL**.

Information stored includes:

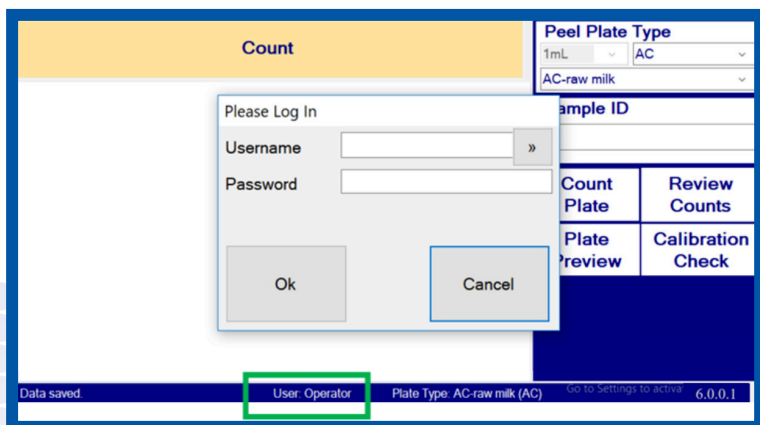
- Peel Plate Type
- Date
- Time
- Count
- Sample ID
- Note
- Username
- Error
- Counted Image
- Lot Number
- Expiration Date
- Dilution

**Copy Records to USB** button allows an administrator to copy chosen test results (Day, Week, Month, or All) and optionally the associated images to a USB or other external memory device. Test results and image hyperlinks are compiled in a single .csv file for easy export into an Excel file or other database for reporting.

Data can be transmitted in real-time to a network using Ethernet port or a configured printer. Refer to Operator's manual before contacting Technical Services for assistance at [support@charm.com](mailto:support@charm.com) or 1-800-343-2170.



## CHANGE BETWEEN USERS



- 1 To switch from one user to another, click on **User:** shown in center of lower toolbar in green box.
- 2 Login pop-up window prompts for new username and password. Press OK.

Refer to limited warranty in OM-680, Peel Plate Colony Counter Operator's Manual.