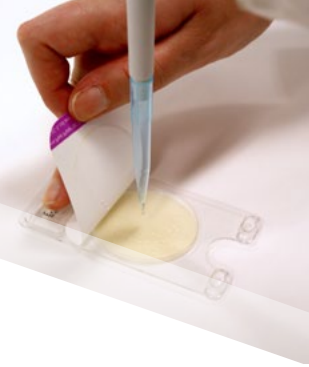
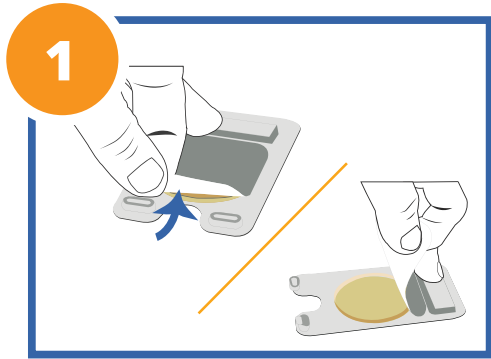


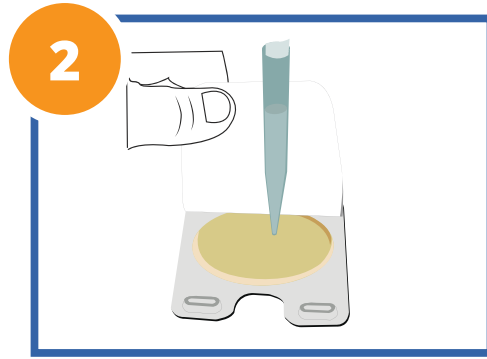
Charm Peel Plate® Test Procedure Steps:



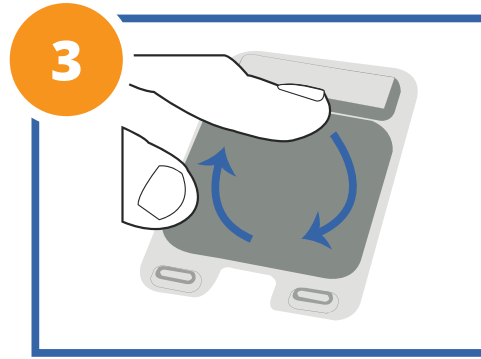
Refer to Current Charm® Operator's Manual for Validation/Approvals and Complete Procedure



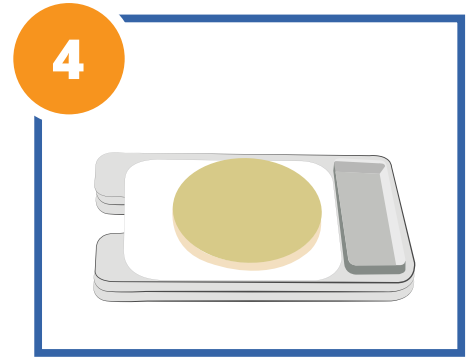
1 Press back and lift tab. Pull up and expose culture disk



2 Vertically pipet to center. 1 mL in 2 to 3 seconds 1 to 2 cm from surface



3 Reseal adhesive cover



4 Stack and incubate cover down

Peel Plate Incubation Time/Temperature Chart

	Peel Plate AC test	*Peel Plate CC test	*Peel Plate EC test	*Peel Plate EB test	Peel Plate YM test	Peel Plate HET test	Peel Plate SA test
Time	48 ± 3 hr	24 ± 2 hr	24 ± 2 hr	24 to 48 hr	3 to 5 days	5 to 7 days	24 to 48 hr
Temperature							
Dairy	32 °C ± 1°	32 °C ± 1°	32 °C ± 1°	37 °C ± 1°	25 °C ± 3°	N/A	35 to 37 °C
Water	N/A	N/A	35 °C ± 1°	N/A	N/A	20 to 28 °C	N/A
Other Products	35 °C ± 1°	35 °C ± 1°	35 °C ± 1°	37 °C ± 1°	25 °C ± 3°	20 to 28 °C	35 to 37 °C

*Includes CD plate, use Dairy incubation temperature

www.charm.com

T +1.978.687.9200 | F +1.978.687.9216 | E info@charm.com | 659 Andover Street, Lawrence, MA 01843-1032, USA

© 2019 Charm Sciences, Inc. Charm is a registered trademark of Charm Sciences, Inc. | MRK-1296-001 May-2019

