

EPIC Microbial ATP System

Rapid Release of UHT Aseptic and ESL (High and Low Acid) Products



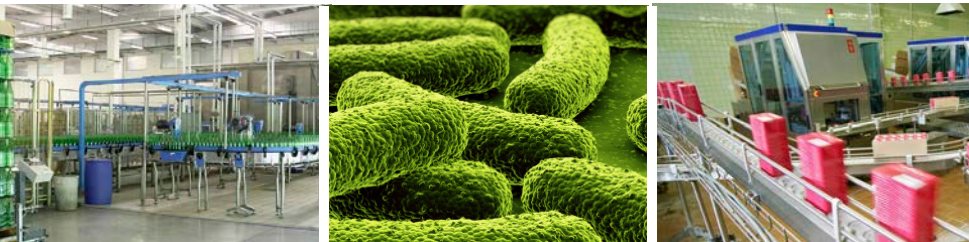
Superior Science

Traditional microbiological tests for Ultra High Temperature (UHT) pasteurized aseptic beverages, and Extended Shelf Life (ESL) can take a week or more for results, requiring products to be held in the warehouse. This reduces operational efficiency and lengthens production cycles. ATP (adenosine triphosphate) bioluminescence testing is the method of choice for rapid screening of finished aseptic UHT and ESL High and Low Acid products. The EPIC Microbial ATP System has reduced the product hold time to 24 - 72 hours.

EPIC is a presence/absence test for ATP, a bio-marker of microbiological growth. End product is incubated in its original package for 24 to 72 hours. Samples are pipetted onto the microplate and inserted into the EPIC system. The test becomes fully automated with reagent additions, incubations, readings, and analysis.

BENEFITS OF EPIC SYSTEM INCLUDE:

- ◆ **Reduction Inventory and warehouse costs** - reducing critical microbial testing from weeks down as low as 24 hours
- ◆ **Cost Saving** - early detection of costly process contamination
- ◆ **Most sensitive** - with applications for increased sensitivity
- ◆ **Labor savings** - with automated fast throughput of 96 samples in less than 30 minutes
- ◆ **Unparalleled global support** - 24/7 technical service and support



Simple Procedure

1.

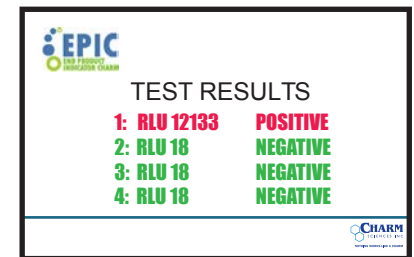


ADD SAMPLE

2.



INSERT PLATE INTO EPIC SYSTEM



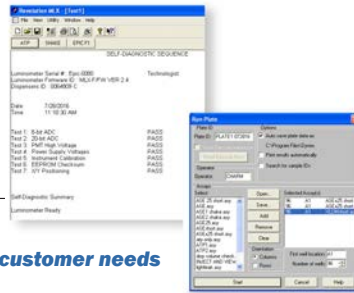
GET RESULTS

Instrument Overview

The EPIC system's robust design allows users to perform self-maintenance, saving time and minimizing operation downtime.

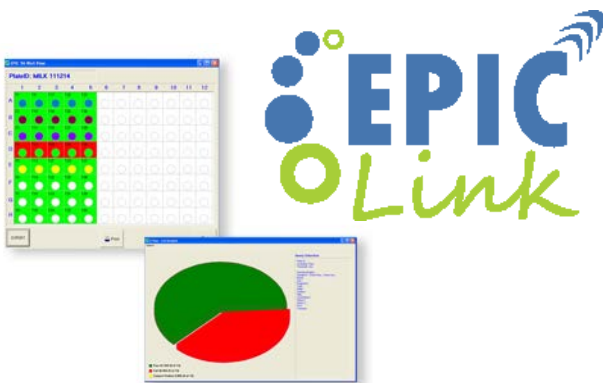


- Automatic Self-Tests performed upon start-up
- Instrument Calibration Check performed before every test
- Customizable Buttons are named and programmed for specific customer needs



- Flexible Run Plate tracks Plate ID and Operator ID
- Select position of starting well and number of samples to be tested
- Integrate barcode Sample ID of test samples

Data Management



EPICLINK SOFTWARE IS DESIGNED FOR EASE OF USE

Track and Trace: Program unique color coded Sample IDs by product types, package size and brand for easy identification.

Dual Color-Coding: Imported test results are color coded by passing (green), suspect (yellow), or failing (red), for additional visual data interpretation.

Customizable: Flexible report templates that allow for data trending of single product IDs over time or exporting of daily control records for instrument verification.

EpicLINK software provides real-time analysis, trending, and report template editing capabilities.

Maximize Your Investment

EPIC REAGENT KITS

- EPIC-1000** **EPIC Test**
- EPIC-IS** **EPIC Increased Sensitivity**
- EPIC-HA** **EPIC High Acid Test**



EPIC CONTROL AND CLEANING KITS

- EPIC-CTRL** **EPIC Daily Control Kit**
- EPIC-WASH** **EPIC Daily Cleaning Kit**

Product Testing with EPIC

Charm EPIC has been successfully adapted to test for a wide range of UHT beverages and products.

- Chocolate milk and other flavored milks
- Condensed milks
- Cream (18 - 40 %)
- Ice cream/shake mixes
- Half & Half
- White milks
- Yogurt-based drinks

- Lactose-free milk
- Non-dairy creamers

- Almond milk
- Coconut Milk
- Rice milk
- Soy milk

- Nutritional drinks
- Juice, milk/juice smoothies
- Broths, puddings, and more

- Sauces
- Infant formulas

Specifications

Description:	EPIC Microbial ATP System
User Interface:	Computer using Windows operating system
Ports:	Serial or USB
Unit Dimensions	43 cm x 33 cm x 46 cm
Weight	19 kg (42 lbs)

ORDER CODES

- LUM-EPIC** EPIC System; Desktop computer and startup accessories

